

Markscheme

May 2024

Computer science

Higher level

Paper 2

© International Baccalaureate Organization 2024

All rights reserved. No part of this product may be reproduced in any form or by any electronic or mechanical means, including information storage and retrieval systems, without the prior written permission from the IB. Additionally, the license tied with this product prohibits use of any selected files or extracts from this product. Use by third parties, including but not limited to publishers, private teachers, tutoring or study services, preparatory schools, vendors operating curriculum mapping services or teacher resource digital platforms and app developers, whether fee-covered or not, is prohibited and is a criminal offense.

More information on how to request written permission in the form of a license can be obtained from <https://ibo.org/become-an-ib-school/ib-publishing/licensing/applying-for-a-license/>.

© Organisation du Baccalauréat International 2024

Tous droits réservés. Aucune partie de ce produit ne peut être reproduite sous quelque forme ni par quelque moyen que ce soit, électronique ou mécanique, y compris des systèmes de stockage et de récupération d'informations, sans l'autorisation écrite préalable de l'IB. De plus, la licence associée à ce produit interdit toute utilisation de tout fichier ou extrait sélectionné dans ce produit. L'utilisation par des tiers, y compris, sans toutefois s'y limiter, des éditeurs, des professeurs particuliers, des services de tutorat ou d'aide aux études, des établissements de préparation à l'enseignement supérieur, des fournisseurs de services de planification des programmes d'études, des gestionnaires de plateformes pédagogiques en ligne, et des développeurs d'applications, moyennant paiement ou non, est interdite et constitue une infraction pénale.

Pour plus d'informations sur la procédure à suivre pour obtenir une autorisation écrite sous la forme d'une licence, rendez-vous à l'adresse <https://ibo.org/become-an-ib-school/ib-publishing/licensing/applying-for-a-license/>.

© Organización del Bachillerato Internacional, 2024

Todos los derechos reservados. No se podrá reproducir ninguna parte de este producto de ninguna forma ni por ningún medio electrónico o mecánico, incluidos los sistemas de almacenamiento y recuperación de información, sin la previa autorización por escrito del IB. Además, la licencia vinculada a este producto prohíbe el uso de todo archivo o fragmento seleccionado de este producto. El uso por parte de terceros —lo que incluye, a título enunciativo, editoriales, profesores particulares, servicios de apoyo académico o ayuda para el estudio, colegios preparatorios, desarrolladores de aplicaciones y entidades que presten servicios de planificación curricular u ofrezcan recursos para docentes mediante plataformas digitales—, ya sea incluido en tasas o no, está prohibido y constituye un delito.

En este enlace encontrará más información sobre cómo solicitar una autorización por escrito en forma de licencia: <https://ibo.org/become-an-ib-school/ib-publishing/licensing/applying-for-a-license/>.

Subject details: Computer science HL paper 2 markscheme

Mark allocation

Candidates are required to answer **all** questions in **one** Option. Total 65 marks.

General

A markscheme often has more specific points worthy of a mark than the total allows. This is intentional. Do not award more than the maximum marks allowed for that part of a question.

When deciding upon alternative answers by candidates to those given in the markscheme, consider the following points:

- Each statement worth one point has a separate line and the end is signified by means of a semi-colon (;).
- An alternative answer or wording is indicated in the markscheme by a “/”; either wording can be accepted.
- Words in (...) in the markscheme are not necessary to gain the mark.
- If the candidate’s answer has the same meaning or can be clearly interpreted as being the same as that in the markscheme then award the mark.
- Mark positively. Give candidates credit for what they have achieved and for what they have got correct, rather than penalizing them for what they have not achieved or what they have got wrong.
- Remember that many candidates are writing in a second language; be forgiving of minor linguistic slips. In this subject effective communication is more important than grammatical accuracy.
- Occasionally, a part of a question may require a calculation whose answer is required for subsequent parts. If an error is made in the first part then it should be penalized. However, if the incorrect answer is used correctly in subsequent parts then **follow through** marks should be awarded. Indicate this with “**FT**”.

General guidance

Issue	Guidance
Answering more than the quantity of responses prescribed in the questions	<ul style="list-style-type: none"> • In the case of an “identify” question, read all answers and mark positively up to the maximum marks. Disregard incorrect answers. • In the case of a “describe” question, which asks for a certain number of facts eg “describe two kinds”, mark the first two correct answers. This could include two descriptions, one description and one identification, or two identifications. • In the case of an “explain” question, which asks for a specified number of explanations eg “explain two reasons ...”, mark the first two correct answers. This could include two full explanations, one explanation, one partial explanation <i>etc.</i>

Option A — Databases

- 1. (a) (i) *Award [1 max].*
String or Text;

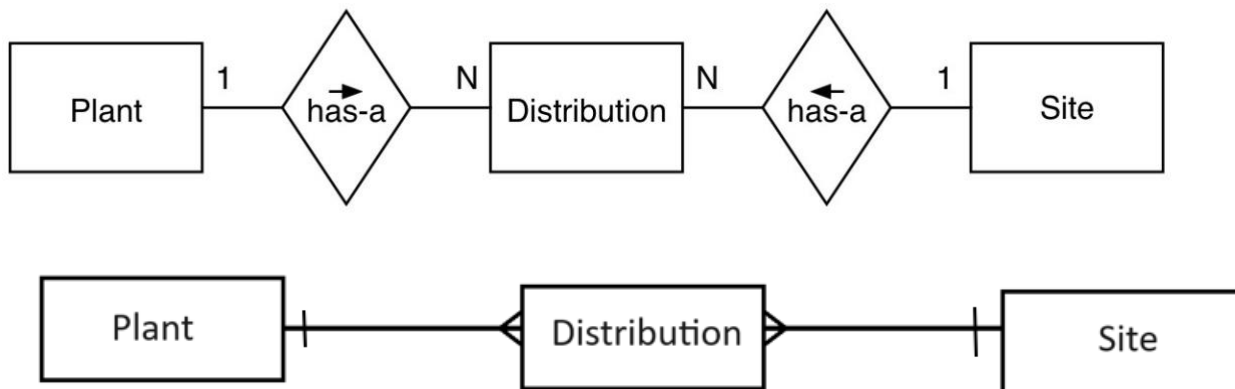
(Accept also Varchar, Alphanumeric)
- (ii) *Award [1 max].*
Real;

(Accept also Integer, Float, Number, Numeric)

- (b) *Award [2 max].*
Range check;
... to ensure input is between -90 to +90;
Presence check;
... to ensure a value has been input;
Type check;
... to ensure the input is numeric;
Data validation is checking to see if the data entered is within an appropriate range;
For example, to check that gradient is between -90 to +90;

Note: The question asks for **one** way. Read whole response and mark to student's advantage

- (c) *Award [3 max].*



Award [1] for three entities (tables - in any order);
Award [1] for Plant to Distribution (1 to many);
Award [1] for Site to Distribution (1 to many).

Note: Allow alternative ERD layouts

- (d) **Award [2 max].**
The Plant_ID and Site_ID can be repeated / not unique // Many plants can be in a site and many sites can have the same plants // No one attribute in Distribution table can uniquely identify the record;
Use of multiple fields uniquely identifies a tuple/record;
And removes the need to add a new ID field as Primary key (which would waste storage space);

- (e) **Award [4 max].**
Award [1] for all relevant tables used (Plant and Distribution);
Award [1] for use of count on SiteID;
Award [1] for correct species and date conditions;
Award [1] for correct condition for connecting the two tables.

```
SELECT COUNT(Site_ID) FROM Plant, Distribution WHERE Species = "Gorse"  
AND DATE = '14/10/2019' AND Plant.Plant_ID = Distribution.Plant_ID
```

or

//Get the Plant_ID from the Plant table:

```
@PlantID = (SELECT Plant_ID FROM Plant WHERE Species = 'Gorse')
```

// @PlantID = 6 at this point; They can use 6 here instead of @PlantID

```
SELECT COUNT(Site_ID) FROM Distribution WHERE Plant_ID = @PlantID  
AND DATE="14/10/2019"
```

or

```
SELECT COUNT(Distribution.Site_ID)  
FROM Plant INNER JOIN Distribution  
ON Plant.Plant_ID = Distribution.Plant_ID  
WHERE Plant.Species = "Gorse" AND Distribution.Date = '14/10/2019'
```

or

(Accept also a description, e.g.)

Create a JOIN between the Plant and Distribution tables based on the Plant_ID field and select records with Species = 'Gorse' and Date = '14/10/20219'. Count the number of records in the table.

Note: Accept other date formats. Accept double or single quotes for strings.

- (f) **Award [3 max].**
Any data written to the environment database must be valid according to all defined rules;
Referential integrity;
... all foreign keys should have a primary key;
Cascades;
...changing data in one table should be carried through to related tables // Update of the data must happen uniformly across all occurrences;
Normalise the database
... to remove/reduce redundant data // to remove repeated data;
Triggers;
... to automatically invoke updates to tables as required;
... all data must be sensible/conform to set rules before being stored;
Validation checks;
Verification checks;
Data updates use transactions to ensure automatic rollback on failure;

2. (a) **Award [3 max].**
Parent authenticated by the DBMS;
Outstanding amount/bill is calculated/displayed;
Transaction is initiated for the transport payment;
Payment details added / entered for transport;
If payment details and payment can be processed by DBMS, then
School transport Account is credited;
... parent's account is debited;
Transaction is completed by DBMS successfully// The transaction is committed;
Automatic e-mail notification of payment sent to parent;
Else, Transaction is rolled back;
Notification of the failed/successful transaction sent to the parent;

- (b) **Award [3 max].**
Record locking /Isolation/Data Locking/Row locking;
Ensures exclusive editing/it is done in isolation;
... to prevent the same data item from being changed by two different transactions / to prevent data values from being accessed by a transaction while another transaction involving the same data is in progress / the process helps keep the update mutually exclusive;

Optimistic Concurrency Control (OCC) // Multi-version concurrency control (MVCC);
Allows multiple users to access the unmodified version of data at the same time // Uses read isolation;
.... To prevent dirty reads / reading the uncommitted changes of another transaction;
On update request, a check is done to see if the existing data has been modified by another user since it was initially read // Uses write validation;
.... To prevent lost updates / overwriting changes from other transactions;

Note: The question asks for an explanation, so marks can be awarded from both blocks.

- (c) **Award [2 max].**
Approving Data Access // Managing user accounts;
Monitoring Performance // Performance tuning;
Backup and Recovery;
Implementing security;
Upgrading/updating the database // Maintenance;
- (d) **Award [4 max].**
Access controls;
Effective and efficient access controls/restrictions so that the end users can access only the data or programs for which they have legitimate privileges;

User accounts;
Different users have usernames and passwords/biometrics to enable unique login experiences;

Data Encryption;
Nullifies the potential value of data interception;
Ensures the confidentiality of data;

*Do **not** credit answers that refer to data integrity rather than security.*

Mark as [2] and [2]

- (e) **Award [6 max].**
Privacy considerations must be ensured
Prevention of unauthorized access to private data//providing security measures e.g. logins;
Encryption of data to ensure it is unusable to unauthorized users;
Especially as many of the data subjects will be under 18;
Ensuring that the inappropriate use of data cannot take place, for example sharing the data with third parties without the consent of data subjects;
Measures to ensure accuracy and completeness when collecting data about a person or persons (corporations included) by technology;
Availability of data content, and the data subject's legal right to access;
Ownership rights to inspect, update or correct these data;
The data is not available to the vast majority of its users // Views are used to access specific data instead of giving access to the whole table //Redaction;
The data base is designed to conform with data protection legislation;
Data must not be kept for longer than it is required;
Only relevant data must be collected and stored;
Keeping the data secure from loss or damage e.g. backup;

3. (a) **Award [2 max].**

Reduces duplicated/Redundant data;

...which reduces wastage of storage space //...which reduces/eliminates data inconsistencies;

... and improves performance / query processing time

Improves data security/privacy;

... as more granular access control can be implemented on individual tables//... enabling sensitive data to be protected;

Improves data integrity/consistency;

...as integrity constraints (e.g. referential integrity) can be set // ...to ensure changes to data follow allowed rules // ...by eliminating update/insert/delete anomalies;

Improves query performance / makes querying data easier;

... as data is stored in a structured manner // ... complex queries become simpler //... and thus, execute faster (on related tables using JOINS);

It makes changes / scaling up easier;

... as new data requirements are easily made by adding more relations /tables //... without disrupting the existing system;

Note: Question asks for **one** reason to be outlined.

(b) **Award [2 max].**

The value in OlymRec has a decimal point / is not a whole number;

... so it would not be accurate /... a float/double/real data type is required;

The timing of athletes will vary in just milliseconds and so the minute will barely change;

So, a decimal point is required for the accurate measurement;

- (c) **Award [5 max].**
Award [1] to identify primary key in ATHLETICS table (either new ID e.g. EventID or composite e.g. Event and Gender);
Award [1] to split into two appropriate tables (e.g. ATHLETICS and EVENTS) at 2NF;
Award [1] to identify Primary Key in EVENTS table;
Award [1] to identify the Foreign Key in ATHLETICS table;
Award [1] for all fields in both tables (e.g. ATHLETICS and EVENTS) correct.

1NF – Unique PK

ATHLETICS(EventID, Event, Type, SubType, Gender, OlymRec, WldRec)

1NF – Composite PK

Produce atomic entries, so that the first row in the ATHLETICS table, for example, becomes two rows with the value of Event (100) repeated. Event + Gender is the composite primary key. This will give:

ATHLETICS(Event, Type, Subtype, Gender, OlymRec, WldRec).

2NF – Composite PK

Event always has the same Type and Subtype, and this is now repeated in multiple rows, so this information should be separated into a separate table, giving:

EVENTS(Event, Type, Subtype)

ATHLETICS(Event*, Gender, OlymRec, WldRec)

EVENTS(EventID, Event, Type, Subtype)

ATHLETICS(EventID*, Gender, OlymRec, WldRec)

Note: allow candidates to add their own field as primary key in any table

- (d) **Award [2 max].**
To remove transitive (functional)/non-key dependencies;
... where non-key attribute(s) depend on another non-key attribute;
... to reduce insert/update/delete anomalies
... and further reduce data redundancy;

4. (a) **Award [2 max].**

They enhance business intelligence;
Since they integrate huge amounts of data from different sources;
Managers and executives can make more informed decisions based on **diverse** data;

They reduce decision-making time //Timely Access to data;
Users can quickly access critical data all in one place // they won't waste time to access data from multiple sources;
Executives can query data/generate reports themselves without waiting for technical support;

Enhances Data Quality and Consistency;
Data transformation / Standardisation/ cleansing is enforced;
Ensuring data accuracy and consistency across different sources // eliminating inconsistencies in data from different sources;

Provides Historical Intelligence;
They store large amounts of historical data that allow analysis of different time periods and trends;
In order to make future predictions;

Provides more efficient access to data // Improves query processing time;
As data is optimised for reporting (rather than transaction processing);
Through de-normalization / removal of constraints;

Note: Award any **two** from **one** group only.

(b) **Award [3 max].**

When the data is collected from different book retailers, each will have their own formats or standards;
Data must be standardized to conform with the structure of the data warehouse;
The data is transformed to select the data that is useful for analysis;
The data is optimised for retrieval;
Aggregation of data // summarizing and consolidating large sets of detailed data into a more concise and manageable data set;
...Improves query performances and reduces storage requirements;
//Allow an example related to the scenario (book sales) such as splitting dates into day, month, year for book sales records;

(c) **Award [3 max].**

Data warehouse update happens in real time // Data in a data warehouse is time dependent // Data is only valid for a period;
The user's needs (data required) change with time;
A record update on a transaction is unique with the timestamp;
Since a data warehouse contains both current and historical data;
... timestamps are required to compare data from different times // ... helps to know the last update of a record;
The Retention Limitation Obligation prohibits organisations from holding personal data indefinitely if there are no legal or business justifications for doing so;
... therefore, timestamping can be used as a tool to help ensure data is current;

(d) *Award [2 max].*

construction of **decision tree** classifiers does not require any domain knowledge or parameter setting, and therefore appropriate for exploratory knowledge discovery;
May struggle to capture complex, non-linear relationships between features.
Generally easy to assimilate/understand by humans // Easy to understand the logic behind the decision-making process;
The learning and classification steps of decision tree induction are simple and fast;
Decision tree classifiers have good accuracy with smaller sets of structured/tabular data;
Decision tree induction algorithms have been used for classification;
Uses estimates and probabilities to calculate likely outcomes;

Neural Networks learning algorithms:

Needs domain knowledge and parameter setting;
More complex to assimilate/understand by humans;
Superior for tasks involving complex patterns and high-dimensional data (e.g., image and speech recognition);
High tolerance of noisy data as well as their ability to classify patterns on which they have not been trained;
Requires significant computational resources and time;
Potential for high accuracy with large datasets;
Uses activation functions and link weights to calculate the next output value;

Note: Award **one** mark for decision tree **and one** mark for neural network learning algorithms. Do not give both marks for giving the opposite answer to one already given.

(e) *Award [4 max].*

To provide a statistical technique/method;
... to direct appropriate marketing to certain types of books;
... which helps to detect outlying data that does not fit the assumed model;
For example, to detect books with abnormally high or low sales;
It can be used to predict the trends and patterns of demand for certain books/genres in the future;
It can help discover new opportunities for product development and marketing strategies;
As anomalies can sometimes reveal hidden patterns or trends that weren't previously known;
For example, very high book sales in a particular month can reveal new market niche for that book, informing increasing stock to meet demand for the period;
Detecting anomalies can point to the presence of errors or fraud in transactions;
Further investigation can be done to fix the error or detect/prevent the fraud;

Note: Max 3 if **no** link to the scenario is seen.

(f) **Award [6 max].**

Cluster analysis employs unsupervised learning strategy // there are no pre-existing data labels;

To discover groups/clusters of data points based on some similarities/differences within the data;

The main focus is to find hidden patterns in the data points and segment them for further analysis;

It is applied in anomaly detection, target marketing, fraud detection analysis, market segmentation etc. //accept **one** example relating to the scenario;

Forecasting is a supervised learning strategy // usually uses historical data with labelled target variables;

To predict (future) values based on historical data //To predict the value of a dependent variable based on the value(s) of independent variable(s);

The main focus is predicting (future) trends or events;

It is applied in call volume prediction, weather forecasting, demand forecasting, stock market prediction etc. //accept **one** example relating to the scenario;

Mark as [3] and [3]

Option B – Modelling and simulation

5. (a) *Award [3 max].*
NUMBER_OF_WALLS
WALL1_HEIGHT
WALL1_WIDTH
TILE_HEIGHT;
TILE_WIDTH;
Etc

Note: *do not accept vague variables like ‘size’ (but ‘dimensions’ is acceptable).*

- (b) *Award [4 max].*
The cabinet widths when added together must be less than the wall width;
in order for the cabinets to fit the available space;

The width of the room and cabinet depths must be taken into account when fitting cabinets to opposite walls;
to make sure there is enough room for a person to (comfortably) walk/work between them;

Accept other reasonable answers.

Mark as [2] and [2]

- (c) *Award [4 max].*
The accuracy of the measurements/shape of the room;
If the room was not measured correctly, the resulting simulation will not be correct;

The dimensions of the cabinets/tiles used in the simulation;
The cabinets/tiles may prove to be too big for the available space;

The quality of the representation of colours/designs/patterns of the products;
May lead to customer disappointment as they may not receive what they were expecting;

If it's not a VR simulation;
it may be difficult to visualize how much space there is around a person when the cabinets are fitted;

Accept other reasonable answers.
Do not accept hardware limitations.

Mark as [2] and [2]

- (d) *Award [5 max].*
Award [2] for advantage;
Award [2] for disadvantage;
Award [1] for conclusion.

Example answers:

Allows the customer to try out different designs;
until it meets their requirements;

The simulation will take time to set up;
and it may not be timely enough to satisfy the customer;

The simulation depends on measurements taken;
And it may not be accurate enough / the kitchen may not fit in the actual space;

The usefulness of the simulation depends on the hardware;
It may take too much time to render;

The simulation is only a tool that may help to avoid making expensive mistakes / that may help to ensure better customer satisfaction;

6. (a) **Award [2 max].**
The images provided may be high resolution;
the device will therefore need to have sufficient amount of RAM;
So that images can load quickly / correctly;
- Standard memory requirements should be enough;
Since only text and images are being displayed;
- (b) **Award [1 max].**
(3D) Rendering;
- (c) **Award [3 max].**
Ray tracing renders the image by computing the path of light between the objects in the room and different viewpoints;
Allows the objects in the room to be simulated and shown as they would look from different positions and angles;
Allowing a more realistic experience while operating the virtual walk-through;
- (d) **Award [4 max].**
Privacy – the animation may accidentally capture images that the homeowner would rather were not made public;
- Security – the animation may show security flaws;
So that a potential burglar may enter the property;
- Reliability – the animation may make the property seem better than it is,
so that the potential buyer may feel cheated;
- Anonymity – items in the animation may identify the seller of the property;
which could be illegal / have negative impact on the seller.

Mark as [2] and [2] for 2 considerations.

Accept other reasonable answers.

7. (a) (i) *Award [1 max].*
=SUM(B3:E3) // =B3+C3+D3+E3
- (ii) *Award [1 max].*
=AVERAGE(B3:E3) // =(B3+C3+D3+E3)/4 // = F3/4;
- (iii) *Award [1 max].*
=MAX(B3:E3)
- (iv) *Award [1 max].*
=MIN(B3:E3)

Note: Penalise a missing '=' sign only once.

- (b) *Award [5 max].*
Inclusion of 7 or 1.07 anywhere in the answer (either in a cell or in formula);
Use of absolute cell reference for common target % in cell B16;
Use correct formula in cell B16, either “=B3*1.07” or “=B3*(1+\$C\$12/100)”;
Use correctly adapted formulas in cells C16, D16, E16;
Use correct formulas in F16 and G16, either similar to columns B-E or just directly calculating the sum and average on B16..E16;

- (c) *Award [2 max].*
The model only shows data for one year;
It may not be an accurate basis for predicting next year’s outcome;
- The model assumes there is the same target % for each department;
This may not be an accurate reflection of the way the business is developing;
- The future sales cannot be predicted based on a desired % increase;
For a prediction you need trends over time;

- (d) (i) *Award [1 max].*
=B24+B28 / =B24+B26+B27 / =SUM(B24, B28)
- (ii) *Award [1 max].*
=B13-B30 / =B13-B24-B28 / =B13-B24-B26-B27

Note: Penalise a missing '=' sign only once.

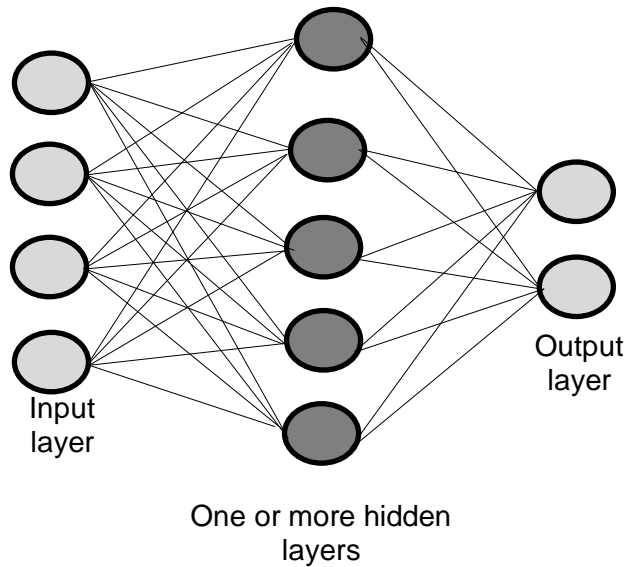
(e) *Award [6 max].*

- Use of a loop with correct parameters;
- Prompts to let user know for which department to enter data/which quarter;
- Appropriately named array for at least one quarter;
- All arrays appropriately named;
- Correct formula to add together annual data;
- All input/calculated data assigned to correct array elements;

Example algorithm:

```
loop COUNT from 0 to 7 //allow from 1 to 8
  output "Enter data for ", DEPARTMENT[COUNT], " Department"
  output "Apr - Jun: "
  input APR_JUN[COUNT]
  output "Jul - Sep: "
  input JUL_SEP[COUNT]
  output "Oct - Dec: "
  input OCT_DEC[COUNT]
  output "Jan - Mar: "
  input JAN_MAR[COUNT]
  WHOLEYEAR[COUNT] = APR_JUN[COUNT] + JUL_SEP[COUNT] +
  OCT_DEC[COUNT] + JAN_MAR[COUNT]
end loop
```

8. (a) **Award [2 max].**
Award [1] for diagram with 3 connected areas;
Award [1] for correct labelling.



- (b) **Award [4 max].**
Speech recognition requires the input of an acoustic signal;
Input to speech recognition systems must be precise (with specific named requirements);
The neural network tries to identify the words that were spoken using deep learning;
The output is then given based on probability, where the system will offer the highest probability 'suggestion' as the required output;
Natural language processing is the ability of the computer system to understand the human language;
Natural language processing is designed to understand the input from a user as though they were interacting with another person;
This system would take the data from the speech recognition as its input and attempt to work out what is required;

Accept other valid statements.

Note: accents or speech impediments are not related to the structure of language.

- (c) **Award [4 max].**
Award [1] for name of key structure;
Award [1] for appropriate expansion and/or example.

Syntax;

Spoken natural language often uses sentences that are not semantically complete e.g. “My case please” which means something like “Get me my case please”;

Semantics;

Natural language includes many referents that need to be resolved for the robot to be able to obey, e.g. the underlined words in human speech like “My case is over there. Bring it to my room”;

Pragmatics;

Natural language uses implied understanding, e.g. a person might say “Can you take my case to my room?” to which “Yes, I can” would not be a correct answer as the original statement is pragmatically an instruction but it is semantically a question.

Mark as [2] and [2]

Note: Pragmatics is not on the syllabus, but it is an acceptable answer.

- (d) **Award [4 max].**

Hybrid machine translation;

Makes use of the strengths of statistical and rule-based translation techniques;

Neural machine translation;

Makes use of a deep learning-based approach;

Mark as [2] and [2]

- (e) **Award [6 max].**

Supervised learning uses rules to follow to match output to known/given input;

It makes use of training data to learn the link between the input and output;

It has access to labels and has prior knowledge of the datasets;

The training data can be generalized and the resulting model accurately used on new data;

Unsupervised learning does not use output data / has no labelled prior knowledge;

The algorithm is left to discover and present the hidden structure in the data;

It is able to use its own prior knowledge/learning to develop further;

Which allows it to perform more complex tasks over time;

Option C – Web science

9. (a) *Award [2 max].*

*Award [1] if up to 2 components identified;
Award [2] if all components identified.*

The URL contains the protocol/scheme, domain, sub domain and Top-level domain (path); and the file resource (Query/&fragment);

For reference:

Scheme/Protocol: https://
Subdomain: www
Domain Name: educationalsite.org
Top level domain: org
Path: /assets/home.html

(b) *Award [3 max].*

*Award [1] for the text above the top row being correct;
Award [1] for top row being correct;
Award [1] for the body of the table being blank. [OBJ]*

Mother Tongue Languages

Mother Tongue
English
Spanish
French
Hindi
Mandarin
Japanese
Korean

Or

Mother tongue Languages

Mother Tongue

(c) **Award [2 max].**

The web page does not display different content each time it is viewed; it doesn't change dependent on either user input, time of day etc;

A static web page requires the source code to be rewritten/edited/modified; to add new content to be added;

A static page is one where the construction of the page is controlled by the browser on the client device and does not link to an external data source;

Whereas a dynamic web page is linked to an external data source. The data sources could include text files, a database, XML files etc;

(d) **Award [3 max].**

Client-side scripting languages would include Javascript, jquery etc; These are commonly used languages that add functionality and interaction to pages; There is broad implementation of the languages; and are accepted as a standard; Client-side languages are rendered in the browser rather than on the server; Failure to correctly support may reduce functionality; cause errors in appearance or interaction;

Broad support of client-side scripting languages allows similar functionality and therefore similar browsing experience independent of browser type;

(e) **Award [2 max].**

A protocol is a set of rules which enable network communication that must be followed;

A standard is a set of rules which have broad support and should be adhered to and provide a framework for development.

(f) **Award [4 max].**

The DNS server or Domain Name Service server, translates the Domain names into an IP Address;

The browser first checks its own cache to see if it has a recent DNS record for the domain. If found, it uses this information to directly connect to the website's IP address.

If the required DNS record is not found locally, the DNS query is sent to the configured DNS resolver until the top-level Domain (TLD).

Top-level domain servers are the ultimate authority for the domain and hold the master list of sites for the domain.

Address resolution occurs in the application layer of TCP/IP.

The DNS resolver sends the IP address back to the user's web browser and information is displayed.

If it is not found, an error message is sent back to the client's browser.

(g) *Award [4 max].*

File Size:

Lossy compression allows the file size to be reduced (more than lossless compression);

This will mean that it can be used to transfer information (uploads and downloads) between devices more rapidly than lossless compression;

Or

Due to higher compression from lossy methods, the file occupies less storage space on a mobile device.

Or

Smaller file sizes mean faster loading and processing times, enhancing the overall performance and responsiveness of mobile applications and devices.

Quality

Although there will be some reduction in the picture quality or sound (due to loss of data);

The advantages of greater speed of transfer will outweigh the loss of image quality as the screen size of the mobile device may not be sufficiently large for the imperfections to be apparent; [00]

Cost

Lossy compression resulting in smaller file size would require less data usage, conserving bandwidth and reducing costs for mobile users.

Note: Each cluster carries 2-mark (1 for identification and one for explanation)
Maximum 4.

10. (a) **Award [2 max].**
Keywords are often matched with the metatag keywords and description as well as the page content increasing the accuracy of the search;
Use of keywords helps to clarify the searchers thinking;
Using a phrase adds additional terms that are either ignored by the search engine or could provide false positive results;
Can reduce contextual differences derived from use of language in the results I.e. the phrase was meant to say XX but could be literally interpreted as XXYY;
Reduces differences derived from abbreviations and widely accepted but grammatically incorrect text speech I.e. you and u why and y etc;

Note: Consider focus on Keywords alone or a combination of keywords and phrases.

- (b) **Award [1 max].**
A – B – E

- (c) **Award [2 max].**
The breadth first crawl ensures that all pages at a certain depth are indexed before moving deeper; giving a thorough snapshot of the web.

The breadth first crawl completes /visits all the links on the page before moving to the next page, whereas the depth first crawl follows the line of one series of links from page to page until it ends. Potentially this means the initial pages may not be completely indexed if the stack is large;

Prioritizes more important, higher-level pages, which are more likely to contain significant information and links to other relevant content.

Breadth first enables a wider range of possible content to be searched although it may not uncover information at the same level of depth;

- (d) **Award [2 max].**
Page rank is a numerical value that represents the importance of a page;
A Dampening factor is applied to the calculation;
Page rank algorithm is recursive;
Page rank uses the page rank of incoming / outgoing links;

Note: Candidates do not need to know the formula for page rank.

(e) *Award [4 max].*

Information inaccuracy:

As the Black hat SEO distorts search rankings (using keyword stuffing), it provides false/inaccurate information;

The students may potentially have unintended access to inappropriate material;

The validity of material is questionable using unethical techniques;

Time and Resources:

This may lead to wastage of bandwidth visiting unintended websites.

The time wasted in visiting the site;

Security

including exposure to malware and other security issues

potential damage from this;

Note: *Award [2] + [2]*

Note: *Award [2 max] if there is no reference to DP History.*

Information for examiners about Black hat techniques (for reference purpose only):

Black hat techniques may include:

Keyword stuffing - The practice of filling your content with irrelevant keywords in attempt to manipulate where the page ranks

Cloaking - Presenting a different URL and content to the user and the search spider/crawler

Redirections – Sending the viewer to a different URL than the one initially clicked

Duplicated content – Adding duplicate content from High quality sources

Invisible words – Using hidden text (white background and white text, very small font size which is invisible to the viewer but is searched and indexed

Bait and switch techniques - Create content around the topic being searched for then switch the content once it is indexed

Paid links and link farms - Page rank and HITS use links as a metric for ranking - paid links and link farms boost numbers of links and there for potentially impact ranking

Blog comment spam - not as significant as now Google is blocking these from calculations, but better blogs will have “nofollow” on the comments.

11. (a) **Award [2 max].**
Award [1] for identification;
Award [1] for additional development.

Connection and sharing between nodes; enabling better resource utilization / collaboration / distributed computing power / storage.

Reliability of the network in the event of failure of one or more nodes (fault tolerance); providing redundancy and replication to ensure data durability and availability in cases of node failures or network partitions.

Ownership & responsibility to a large group; by ensuring that each node maintains their own security and functionality.

Distributed networks are more scalable, especially in scenarios where network is distributed among large geographical area; they leverage localized resources and reduce latency and improve overall user experiences.

- (b) **Award [2 max].**
Award [1] for identification of the advantage of Client Server architecture;
Award [1] for development.

Has structured hierarchy/centralized control; the functionality of the network will be centrally controlled, giving more systematic and structured access to the network through the central server.

Enhanced security; as the server is responsible for the security of the network operations, it facilitates better implementation of the monitoring and enabling network security.

Enables management of resources, storage, applications and users leading to cost saving, enhance better administration.

Client devices doesn't need to have as much processing power, memory, storage, etc. because the applications are kept and run on the server;

- (c) **Award [4 max].**
In cloud computing resources are managed and provided by centralized data centres. and accessed via the internet;
It is often provided as a service, PaaS, SaaS, private cloud, community cloud, public cloud etc
it is generally scalable (sometimes described as rapid elasticity) / adaptable / distributed;
Peer to peer computing is distributed / decentralized;
Peers directly share resources such as files or processing power.
Level of access and control is generally set by the users;
It is focused on sharing rather than supplying a specific service;
There is equality between the peers in the network;

Note: *Award [2]* marks for giving an account of the similarities between cloud and peer to peer computing up to a maximum of 4.

(d) *Award [6 max].*

Decentralization means that resources are distributed rather than localized ensuring that diverse systems and devices can communicate seamlessly;

Open standards (HTTP, TCP/IP, HTML, etc) shifts the control from government (and cooperation) control to a broad selection including individual, like-minded groups and organization;

This enables freedom of expression, sharing, co-operation, communication and collaboration;

Interoperability is a product or system whose interfaces are understood by and work with other systems;

There are no restrictions enabling ease of processing, manipulation and transfer of data;

Interoperability enables information systems (particularly databases) to exchange information without significant modification or the use of third-party agents. Other systems can be designed to interact seamlessly;

Interoperability is based on open standards;

Mark as [3] and [3].

12. (a) **Award [2 max].**
A web graph describes the directed links between pages (entire network of web pages) (or sites) on the world wide web;
A web sub graph looks at a subset of the world wide web; [0B]
- (b) (i) **Award [1 max].**
B & I
- (ii) **Award [1 max].**
E, D C, G & H
- (iii) **Award [1 max].**
F & A
- (c) **Award [4 max].**
A directed graph is one where the edges have direction to them. The edge is represented by an arrow. (An undirected graph would simply show that there is a connection without direction of the link);
A weighted graph is one where the vertices or edge of the graph have been assigned a weight or value.
This web sub graph has edges that are directed, but since no values are added to the graph it is unweighted;
The Adjacency matrix shows the number of connections made but this is not represented in the graph;
With partial information is provided the significance is harder to judge. Search engines algorithms like page rank make use of the incoming and outgoing links and ranks of the other pages.
A nodes page rank score is developed by factors including volume of incoming and outgoing links - only partly reflected in the web graph and adjacency matrix;
Search engines potentially value sites with high levels of connections (Authority and hub scores) and use this to provide a higher ranking;
- Note:** The ranking is not determined by these links alone and different search engine algorithms may place different weightings on the incoming and outgoing edges.

13. (a) *Award [2 max].*

Ontology is a representation, formal naming and definition of the categories, properties and relations/interrelationships that exist for a particular field or knowledge domain in this case the analysis and sequencing of genetic materials in the genomes of several different organisms;

Ontologies provides; a Common language for describing the genetic data / a common framework to enable use and reuse of data / searchable keywords and phrases / formal language for the knowledge domain in this case gene sequencing and genetic structure;

Ontologies enable data from various sources to be brought together for example the data from the human genome project and research projects around other species;

Ontologies can use if-then rules to make logical inferences;

(b) *Award [3 max].*

The open structure of the project is a collaborative work which enables researchers and organizations to share, collate and present their research and findings in an accessible medium;

Data and information are not restricted to specific journals or publications, which are often subscription based;

Researchers can comment and discuss the findings applying the capabilities of multiple researchers and scientists;

New research is presented and shared enabling other researchers to utilize the data.

Data is available to be downloaded and used, reducing the time and cost of developing the datasets;

(c) **Award [6 max].**

Folksonomies are a system for classifying information using user generated keywords often in the form of hashtags and social media platforms support of the use of #hashtags and this extends to their search engines and popularity rating systems;

Social media is widely used by a broad selection of the population potentially giving a significant audience to the tagged articles and posts

The use of “likes” as well as viewing traffic statistics increases the popularity of posts and therefore frequency that these posts appear in “popular post” selections within social media news threads;

Within social media, groups are formed and develop around the popular or frequently used hashtags;

The simplicity of and ease of access to social media means that large numbers of people can participate in and contribute to popular issues this can include re-posting and tagging;

Tags are often used across a range of social media platforms increasing the visibility and awareness of the underlying issue;

The international nature of social media makes restriction of the use of folksonomies by controlling interests difficult.

Inaccurate information and “fake news” can be propagated using folksonomies (popular tags) and the distribution of this magnified by its inclusion of this in popular threads.

Organizations can make use of or create and promote popular tags to promote their own agendas, opinions and bias.

The use of folksonomies by interest groups and lack of moderation may make some viewers sceptical of the value and significance of the material tagged with the popular tag.

The non-popular tags or mis-spelt tags or tags not conveying exact meaning may deprive the access to content due to its incorrect nature.

As a result:

The combination of easy access and publishing, use of folksonomies to facilitate searching and aggregation, a low level of moderation, automated promotion of trending tags and posts, and the lack of a single over-riding jurisdiction and popularity have enable the formation of groups and communities, facilitating free discussion and to a very large audience (face book has in excess of 2 Billion users for example) and this is potentially influencing governmental and political decision making. However, the ease of access/publishing and lack of moderation and potential for abuse may make limit the democratization effect of the use of folksonomies.

Note: Needs a balanced discussion of both perspectives.

Option D – Object-oriented programming

14. (a) **Award [2 max].**
an object is an abstract entity;
consists of data/attributes/properties;
has methods/behaviour/actions on (that data/attributes/properties);
An object occupies memory / has a lifecycle;
An object is an instance of a class;

- (b) **Award [1 max].**
Any instance variable with the prefix 'set' and () such as:
`setNumberPlate(String numberPlate);`
`setPricePerDay(double pricePerDay);`
`setRentalClass(char rentalClass);`
`setYear(int year);`
`SetBrandModel(String brandModel);`
`SetFuelType(boolean fuelType);`
`SetTransmissionType(boolean transmissionType);`

Note: Ignore the parameter and semi colon.

- (c) **Award [3 max].**
public method;
return type;
correct return; // keyword 'this' is not required

Example answer:

```
public String getBrandModel()  
{  
    return this.brandModel;  
}
```

- (d) **Award [2 max].**
A default constructor instantiates an object of a class;
with null or default values (for the instance variables/attributes);
without using any parameter;
- (e) **Award [2 max].**
fuelType can no longer be boolean;
but could be another datatype such as int/char/String (or similar) to represent the distinct values;
for 4 different types of fuel;
- (f) **Award [1 max].**
Car inherits Rental (allow Car 'is a' Rental or Car extends Rental or Car is a subclass of Rental.);

Note: Accept 'inheritance'.

- (g) **Award [3 max].**
Award [1] for (public) class Car extends Rental;
Award [1] for declaring numberOfDoors;
Award [1] for numberOfDoors being set to 4 within the constructor;
Award [1] for correct getter / setter method; // keyword 'this' is not required

Example answer:

```
public class Car extends Rental
{
    private int numberOfDoors;

    public Car ()
    {
        this.numberOfDoors = 4;
    }

    public int getNumberOfDoors ()
    {
        return this.numberOfDoors; // 'this' not required
    }
    public void setNumberOfDoors (int n)
    {
        this.numberOfDoors = n; // accept without 'this' also
    }
}
```

15. (a) **Award [1 max].**
Inheritance;

(b) **Award [3 max].**

Because the parent class holds common attributes and methods;
inheritance will enhance reuse of code;
and reduce maintenance costs;

Faster development time;
as the existing code (base class) is already tested;
and less code needs to be written and debugged;
// Do not accept: 'faster' or 'easier' without proper explanation.

child classes may add new functionality (Extensibility);
extending the parent's action and data, without redefining them;

child class redefines the base class methods (Overriding);
to provide a different functionality to existing method of the parent class;

easier to maintain;
as the changes in the parent class are automatically reflected in the child class;

Note: *Award [2 max]* for one benefit with explanation. *Award [1 max]* for identification of another benefit. Accept benefits explained for any incorrect but legitimate OOP feature identified in 15a.

(c) **Award [2 max].**
Encapsulation;
Polymorphism;
Abstraction;

Note: Allow FT for 15a.

(d) **Award [2 max].**

Easier / faster to debug/test;
because there are far fewer mistakes in the smaller/individual modules.

Speedier / faster completion of the project;
because different teams work on different modules.

facilitates reusability of the code;
as the existing modules can be reused across other modules.

Improves code readability / organisation;
smaller manageable modules leading to better logical organization.

Note: Do not allow mixing the points from different clusters. Do not allow easier/faster without any further description in context of modularity.

16. (a) **Award [2 max].**
 the value/variable passed when the function/method is called;
 passed as a value or as a reference;
 is found in the parameter list of the method definition/signature;
- (b) **Award [8 max].**
Award [1] for correct method signature (excluding the return type);
Award [1] for instantiating a Car array (result) of size 100;
Award [1] for loop through allCars with length condition;
Award [1] for setting and resetting a variable (found or similar), inside the outer loop;
Award [1] for the loop that checks the uniqueness
Award [1] for checking for a null pointer exception in at least one loop;
Award [1] for correct test; (use of equals() and '==')
Award [1] for correctly adding the Car when not found in result;
Award [1] for returning the correct result - correct array of objects of Car;

Note: Do not accept ArrayList but allow FT for MP 5 and 7. The question specifically asks for an array.

Example answer 1:

```
public Car[] findBrandModels(Car[] allCars)
{
    Car[] result = new Car[100];
    int i = 0;
    while ((i<allCars.length) && (allCars[i]!=null))
    {
        int j = 0;
        boolean found = false;
        while ((j<100) && (result[j]!=null) && (!found))
        {
            if (result[j].getBrandModel().equals(allCars[i].getBrandModel()))
            {
                found = true;
            }
            j++;
        }
        if (!found)
        {
            result[j] = allCars[i];
        }
        i++;
    }
    return result;
}
```

Example answer 2:

```
public Car[] findBrandModels(Car[] allCars)
{
    int count = 0;
    Car[] result = new Car[100];
    for (int i = 0; i < allCars.length && allCars[i] != null; i++)
    {
        boolean found = false;
        for (int j = 0; j < i; j++)
        {
            if(allCars[i].getBrandModel().equals(allCars[j].getBrandModel()))
            {
                found = true;
            }
        }
        if (!found)
        {
            result[count++] = allCars[i];
        }
    }
    return result;
}
```

Example answer 3:

```
public Car[] findBrandModels(Car[] allCars)
{
    Car[] brand = new Car[100];
    int index = 0;
    for(int i=0; i<allCars.length && allCars[i]!=null; i++)
    {
        boolean found = false;
        String bm = allCars[i].getBrandModel();
        for(int j=0; j<index; j++)
        {
            if(brand[j] != null)
            {
                if(brand[j].getBrandModel().equals(bm))
                    found = true;
            }
        }
        if(!found)
        {
            brand[index++] = allCars[i];
        }
    }
    return brand;
}
```

(c) *Award [5 max].*

Example answer 1:

create a `result` array to store the return value of `findBrandModels()`;
iterate through the `result` array to check individual Car object;
if the Car object does not fulfil all three criteria then remove this Car object from result / make this Car object null;
iterate (or sort/search) through the `result` array;
to output the Car objects that are not null / return the `result` array;

Example answer 2:

create a `result` array to store the return value of `findBrandModels()`;
iterate through the `result` array to check individual Car object;
if an object fulfils the three conditions then copy the car object in another array (`desiredCars`);
iterate (or sort/search) through the other array (`desiredCars`);
to output / return the (`desiredCars`) array;

Example answer 3:

create a **modified** version of `findBrandModels()`;
that takes additional parameters that specify desired features;
a car would only be added to the `result` array if the three tests were met;
create a `result` array to store the return value of **modified** `findBrandModels()`;
iterate through the `result` array to output the cars / return the `result` array;

Example answer 4:

create a `result` array to store the return value of `findBrandModels()`;
iterate through the `result` array to check individual Car object;
if the Car object does not fulfil all three criteria, then skip this Car object
if the Car object meets the three criteria
then output the Car object;

Example answer 5:

create `desiredCars` array;
iterate through the result of all `findBrandModels()`;
if an object fulfils the three conditions;
copy the car object in the array `desiredCars`;
to output / return the (`desiredCars`) array;

Note:

Award [3 max] - If the response doesn't use the `findBrandModels()`; For example, if the response only focuses on using if conditions to check three specific requirements for Car objects and present (either output or return) them (including duplicates) to the customer.

17. (a) *Award [1 max].*



(b) *Award [2 max].*

The problem becomes that Car 'has a' Customer and Customer 'has a' car;
This is a circular / duplicate / redundant relationship;
which may cause inconsistencies;
It increases dependencies;
and causes more overhead when changes need to be made;

(c) *Award [5 max].*

Award [2] for stating obligations;
Award [2] for amplifications;
Award [2] for reasons given.

obligation - to respect privacy;
amplification - only relevant data should be stored that helps the customer;
reason - to limit the impact on privacy.

obligation - to provide data security;
amplification - programmers should incorporate safeguards such as encryption;
reason - to limit the chance of personal data being misused;

obligation - to protect data against corruption;
amplification - programmers should incorporate data validation / verification;
reason - to limit the chance of incorrect personal data being stored;

Note: Accept any other valid obligation. Do not accept a third obligation.

18. (a) **Award [3 max].**
Award [1] for instantiating a new node with newCar as parameter;
Award [1] for checking if the root is already null;
Award [1] for assigning newNode.next to point to the start of list using setNext();
Award [1] for assign root to point to newNode.

Example answer:

```
public void addToFront (Car newCar)
{
    CarNode newNode = new CarNode (newCar);
    if (root == null)
    {
        root = newNode;
    }
    else
    {
        newNode.setNext (root);           // accept this.root
        root = newNode;
    }
}
```

- (b) **Award [4 max].**
Award [1] for correct use of history.addToFront();
Award [1] for correct use of history.count();
Award [1] for attempting to update the level;
Award [1] for correctly updating the level;
// keyword 'this' is not required; allow setLevel();

Example answer 1:

```
public void updateHistory (Car newCar)
{
    history.addToFront (newCar);
    int count = history.count();
    level = "Basic";
    if (count > 2) { this.level = "Silver"; }
    if (count > 9) { this.level = "Gold"; }
    if (count > 19) { this.level = "Diamond"; }
}
```

Note: Do not accept if.... else if for example 1.

Example answer 2:

```
public void updateHistory (Car newCar)
{
    history.addToFront (newCar);
    int count = history.count();
    level = "Basic";
    if (count > 19) this.level = "Diamond";
    else if (count > 9) this.level = "Gold";
    else if (count > 2) this.level = "Silver";
}
```

Note: Allow BOD if a candidate didn't make use of previously defined methods.

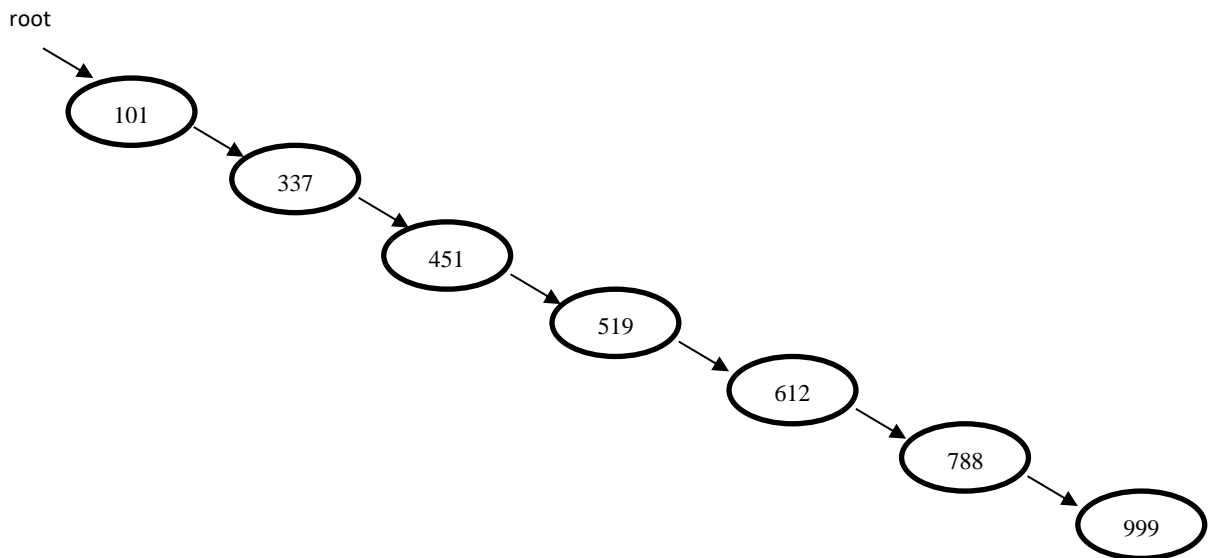
19. (a) **Award [3 max].**
*A linked list is a sequential data structure;
which in the worst case means that all elements have to be searched;
a binary tree uses a binary search algorithm;
Every comparison in a BST (ideally) halves the amount of nodes to search;
In the worst case you need n comparisons for 2^n items in the BST.*

Note: Accept any other suitable answer such as a reference to Big O notation.

- (b) **Award [2 max].**
*Award [2] for correct answer;
Award [1] for mostly correct with only one pair in wrong order.*

101, 337, 451, 519, 612, 788, 999

- (c) **Award [3 max].**
*Award [3] for correct answer;
Award [2] for two numbers in wrong place;
Award [1] for three numbers in wrong place.*



Note: Allow FT from 19b.

*Award [1] for a one (or two) node answer (FT from b);
Award [2] for a correct three to six node answer (FT from b);
Award [3] for a correct full seven node answer (FT from b).*

- (d) **Award [5 max].**
Award [1] for correct method signature;
Award [1] for correct test;
Award [1] for correct add before recursive calls;
Award [1] for correct call to left child;
Award [1] for correct call to right child in order of root -> left -> right.

Example answer:

```
public void storeBST(TNode current)
{
    if (current != null)
    {
        myCollection.add(current.getData());
        storeBST (current.getLeft());
        storeBST (current.getRight());
    }
}
```

Note: Allow without getters.
